

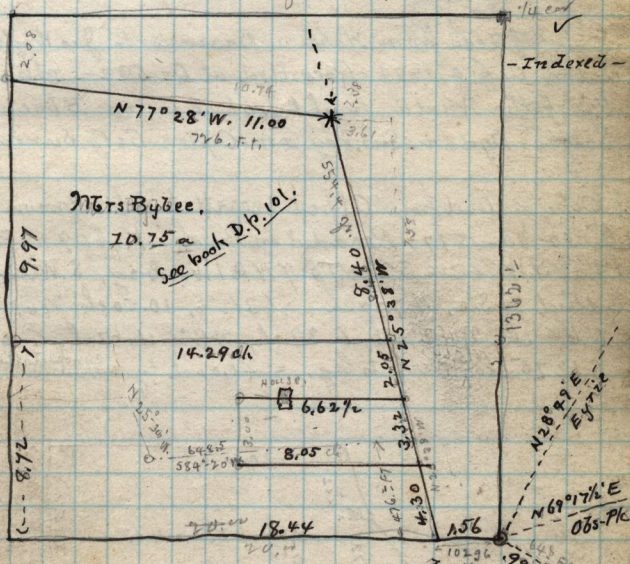
*
to Cor
red
on this
page

S. 78° E, S.E. 76.1 to blazed ligate post, (or bars)
 N 8° 12' E with ^{115°} to blazed cor post on E. side of a
 Miller Return S.W. cor.
 S. 0° 02' E. to N.E. cor. almost from house.

Req. S.E. cor - N. 23.81 W. 8.50 ch. S 23.81 ch E 8.50 to by 20.12

Copy of deed from Alvin Lloyd Miller to Hiram M. Christoad
 March 24 - 1879 - N. 359 - part of S.E. 1/4 13 T5N R2W,
 Beg. 1.50 ch N. 44.30 ch, N 25° 35' W. from S.E. cor of N.E. 1/4
 of S.E. 1/4 Sec 13 a formal thence N 25° 38' W, 8.52 ch,
 W. 6.62 1/2 ch, S. 3.00 ch, E. 8.00 ch to by 2.72 a

N.E. 1/4 of S.E. 1/4 Sec 13 T5N R2W.



The S.E. cor of this 40 a was located
 by running North 20.00 ch. from G. v. r.
 See cor to 18-13-24-19 Sundstone

Wm Cole House
 2.21 1/2 ch
 Bx Elder 10' dia